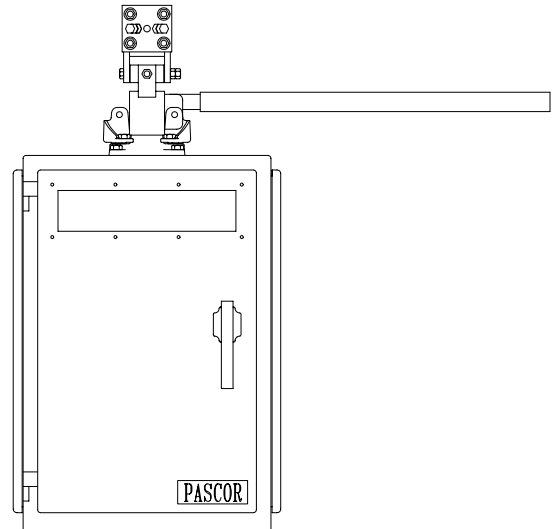
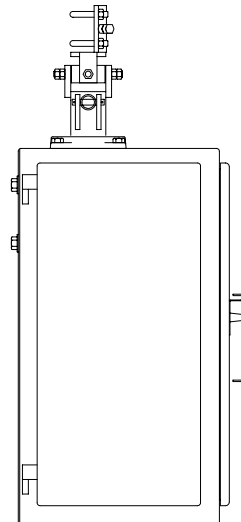


# pascor



### Standard Features

- INTERNAL DECOUPLER
- ASYMMETRIC COUPLING – prevents re-coupling 180° out of position
- VIEW WINDOW IN FRONT DOOR – allows positive reading of decoupler position
- LARGE HOUSING – 32”H 23”W 18”L – ample room for incoming wires.
- HINGED, REMOVABLE DOORS ON THREE SIDES – maintenance free.
- ADJUSTABLE EXTERNAL MECHANICAL STOPS – swing handle operation kept within the same arc as when the motor is operated.
- PERMANENT MAGNET MOTOR – allows dynamic braking which add to the ease of operation
- “U” JOINT OUTPUT – allows for connected torsional
- 8 STAGE AUXILIARY SWITCH FOR CUSTOMER USE

- AUTOMATIC LOCKOUT OF MOTOR CIRCUIT WHEN HAND CRANK IS INSERTED – safety feature.
- 230/115 VAC THERMOSTATICALLY CONTROLLED 150 WATT HEATER
- FUSE PROTECTION ON MOTOR/CONTROL AND HEATER CIRCUITS.

### Optional Features

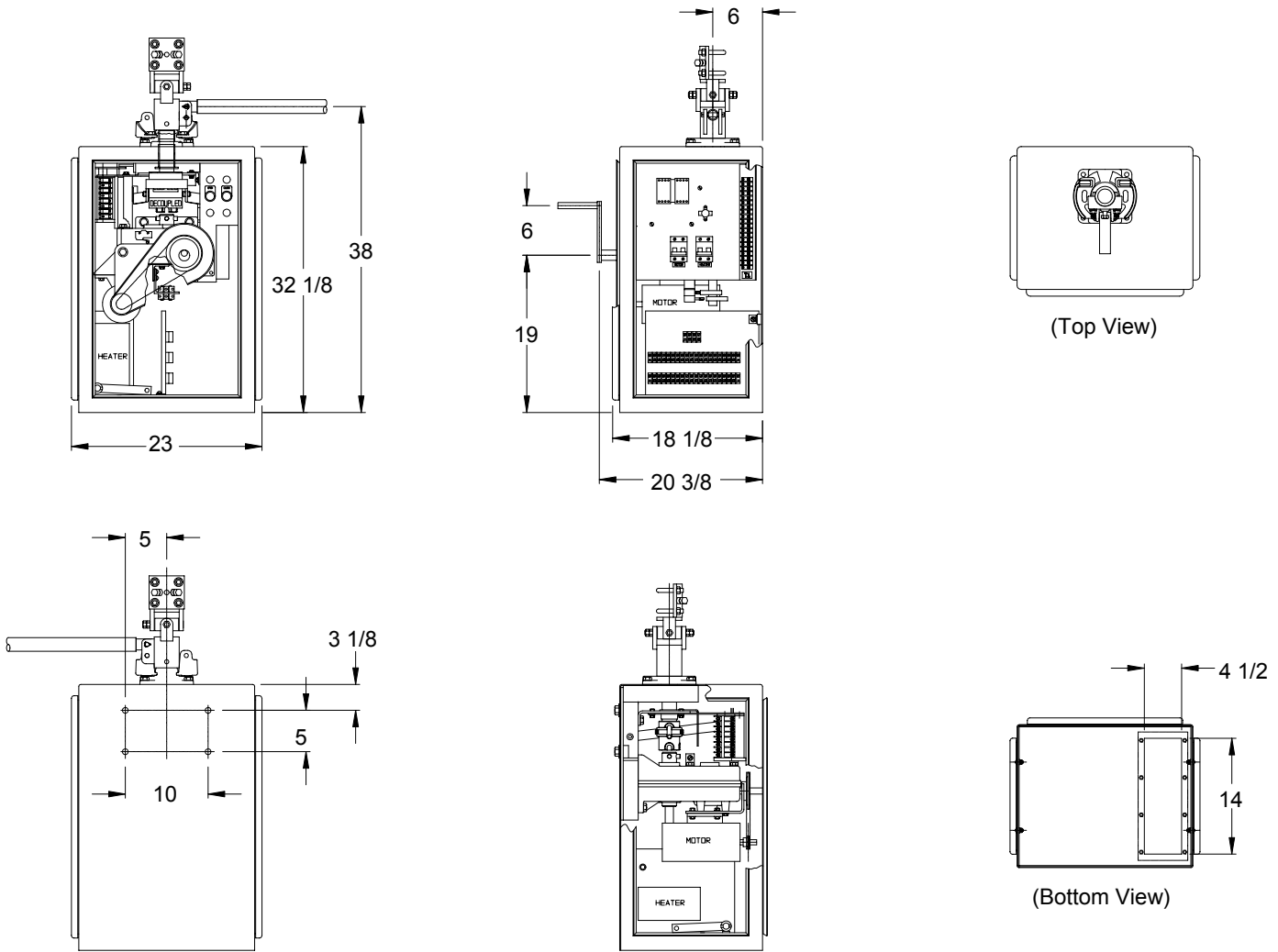
- Stop push-button operation
- Local/remote selector switch indicating lights
- Operations counter
- Circuit breakers
- Auxiliary switch below decoupler

### Differentiating Features

- Internal decoupler allows auxiliary switch to be above decoupler
- The auxiliary switch always reflects position of switch and is not subject to icing.
- A single padlock secures the decoupler and housing
- A second, optional auxiliary switch is available to follow the motor, if desired
- A slip-ring mechanism isolates the operator from “kick” as energy from the vertical pipe wrap-up is released during decoupling

**Pacific Air Switch Corporation**

P.O. Box 328 , 2615 23<sup>rd</sup> Avenue, Forest Grove, OR 97116, (503) 359-3939, Fax: (503) 357-0858



Net Weight : 210 lbs.  
Shipping Weight: 250 lbs.

**ELECTRICAL PARAMETERS**

<b>Table 1</b>		
<b>MOTOR CURRENT RATINGS</b>		
<b>MOTOR</b>	<b>CURRENT (AMPS)</b>	
	<b>INRUSH LOCKED ROTORS</b>	<b>RUNNING FULL LOAD</b>
<b>24 V.D.C.</b>	122	20
<b>48 V.D.C.</b>	59	10
<b>125 V.D.C.</b>	21	4

<b>Table 2</b>		
<b>OPERATING CHARACTERISTICS</b>		
<b>MOTOR</b>	<b>OPERATING TIME (SEC)*</b>	<b>OUTPUT TORQUE IN-LBS (x1000)</b>
<b>DC</b>	4	10
	6	15
	8	20
	10	30

\* Time is for 180 degree rotation of output shaft

**Pacific Air Switch Corporation**

P.O. Box 328 , 2615 23<sup>rd</sup> Avenue, Forest Grove, OR 97116, (503) 359-3939, Fax: (503) 357-0858